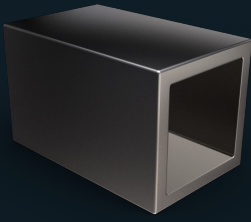


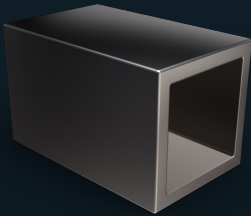
# stainless steel bar and sections



**WELDED  
SQUARE TUBE**  
304/1.4301  
Brushed

Size (mm)	Weight per metre (Kg)
15 x 15 x 1.5	
20 x 20 x 2	
25 x 25 x 1.5	
25 x 25 x 2	
25 x 25 x 3	
30 x 30 x 1.5	
30 x 30 x 2	
30 x 30 x 3	
40 x 40 x 1.5	
40 x 40 x 2	
40 x 40 x 3	

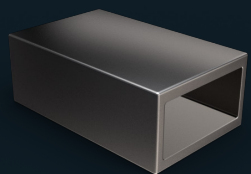
Size (mm)	Weight per metre (Kg)
50 x 50 x 1.5	
50 x 50 x 2	
50 x 50 x 3	
60 x 60 x 2	
60 x 60 x 3	
70 x 70 x 3	
80 x 80 x 2	
80 x 80 x 3	
100 x 100 x 2	
100 x 100 x 3	



**WELDED  
SQUARE TUBE**  
316/1.4401  
Brushed

Size (mm)	Weight per metre (Kg)
20 x 20 x 1.5	
25 x 25 x 1.5	
25 x 25 x 2.0	
30 x 30 x 1.5	
30 x 30 x 2	
30 x 30 x 3	
40 x 40 x 1.5	
40 x 40 x 2	

Size (mm)	Weight per metre (Kg)
40 x 40 x 3	
50 x 50 x 1.5	
50 x 50 x 2	
50 x 50 x 3	
60 x 60 x 3	
80 x 80 x 3	
100 x 100 x 3	

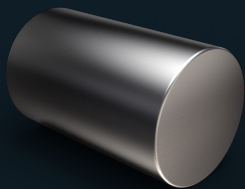


**WELDED  
RECTANGULAR  
TUBE**  
304/1.4301  
Brushed

Size (mm)	Weight per metre (Kg)
20 x 10 x 1.5	
30 x 10 x 1.5	
30 x 15 x 1.5	
30 x 20 x 1.5	
40 x 15 x 1.5	
40 x 20 x 1.5	
40 x 20 x 2	
50 x 25 x 1.5	
50 x 25 x 2	
50 x 25 x 3	
50 x 30 x 1.5	
50 x 30 x 2	
50 x 30 x 3	
60 x 20 x 1.5	

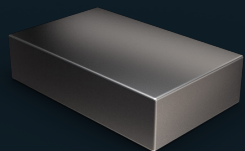
Size (mm)	Weight per metre (Kg)
60 x 30 x 1.5	
60 x 30 x 2	
60 x 30 x 3	
60 x 40 x 1.5	
60 x 40 x 2	
60 x 40 x 3	
80 x 40 x 1.5	
80 x 40 x 2	
80 x 40 x 3	
80 x 60 x 3	
100 x 40 x 3	
100 x 50 x 2	
100 x 50 x 3	
100 x 60 x 3	

# stainless steel bar and plate



**ROUND BAR**  
316L/1.4404

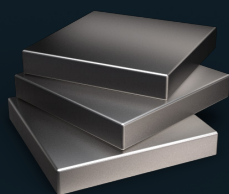
Diameter (mm)	Weight per metre (Kg)
110	
115	
145	
150	
180	
240	
350	
375	
450	



**FLAT BAR**  
304L/1.4307  
Polished 320 grit

Size (mm)	Weight per metre (Kg)
30 x 5	
40 x 5	
50 x 5	
60 x 5	
100 x 5	
30 x 6	
40 x 6	
50 x 6	
30 x 8	
40 x 8	

Size (mm)	Weight per metre (Kg)
50 x 8	
60 x 8	
80 x 8	
100 x 8	
30 x 10	
40 x 10	
50 x 10	
60 x 10	
80 x 10	
100 x 10	



**PLATE**  
316L/1.4307 and  
316L/1.4404

Size (mm)	Weight per metre (Kg)
2500 x 1250 x 25	
3000 x 1500 x 25	
2500 x 1250 x 30	
3000 x 1500 x 30	